

LOADALL | 542-70 AGRIPRO

JCB

AGRIPRO

DUALTECH VT



STAGE V

MAX SPEED
50kph

MAX POWER
173hp / 129kW

MAX TORQUE
690Nm



When creating the NEW **JCB AGRI PRO**, we took our industry leading agricultural Telehandler and added **more power, more torque, more speed, more flow and more stopping power**, resulting in new, never seen before levels of performance and productivity to compliment the already world-beating levels of comfort, strength, durability and reliability.

We call this **JCB PROFORMANCE**.

MORE SPEED

JCB PROFORMANCE

The new high speed DualTech Variable Transmission is capable of a top roading and towing speed of up to 50kph.



GET THE JOB DONE FASTER

The hydrostatic working speed increases to 22kph, with faster acceleration around the yard and in the field.



MORE PRODUCTIVITY

JCB PERFORMANCE

Our most powerful and productive telehandler yet, providing a 22% increase in dynamic tractive effort at working speeds and a 25% increase in on-road productivity.



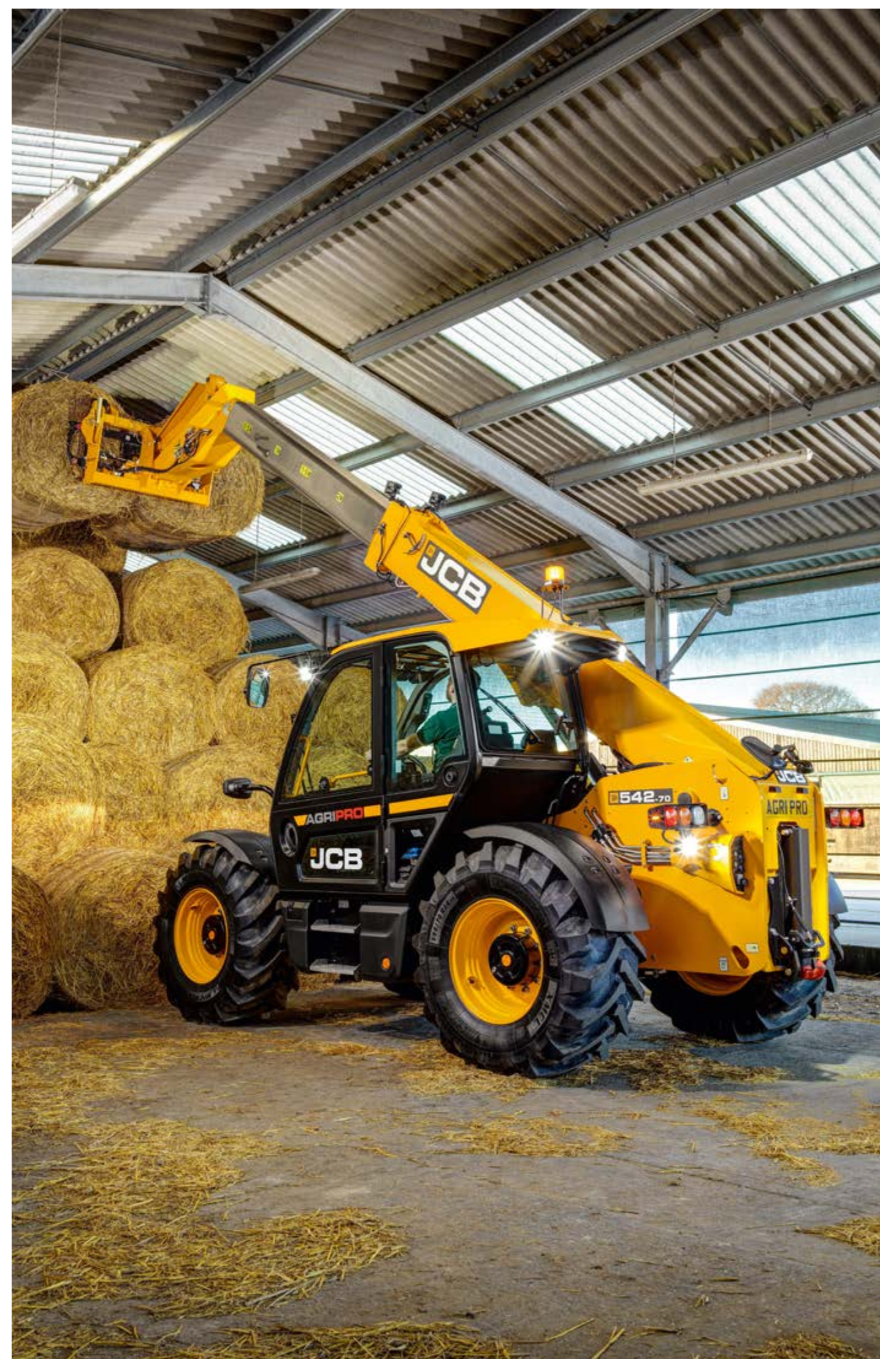
GREATER VERSATILITY

New 160 litres per minute variable displacement piston pump - delivering 14% more flow for improved hydraulic multi-functioning.

MORE POWER

JCB PROFORMANCE

Our new 173hp (129kW), 4.8 litre, JCB DIESELMAX, Stage V engine produces 690Nm of torque at only 1500rpm, providing more power than ever before.



EXTRA HYDRAULIC POWER

Maximise the performance with increased lift capacity in the working area, at reach and at height.

MORE EFFICIENCY

JCB PROFORMANCE

Our DualTech Variable Transmissions are half hydrostatic and half direct mechanical drive, increasing roading efficiency, towing capability and high-speed performance.



GREATER FUEL EFFICIENCY

Our Smart Hydraulics system regenerates the oil in the rams, meaning less engine revs and more fuel saved.

MORE COMFORT

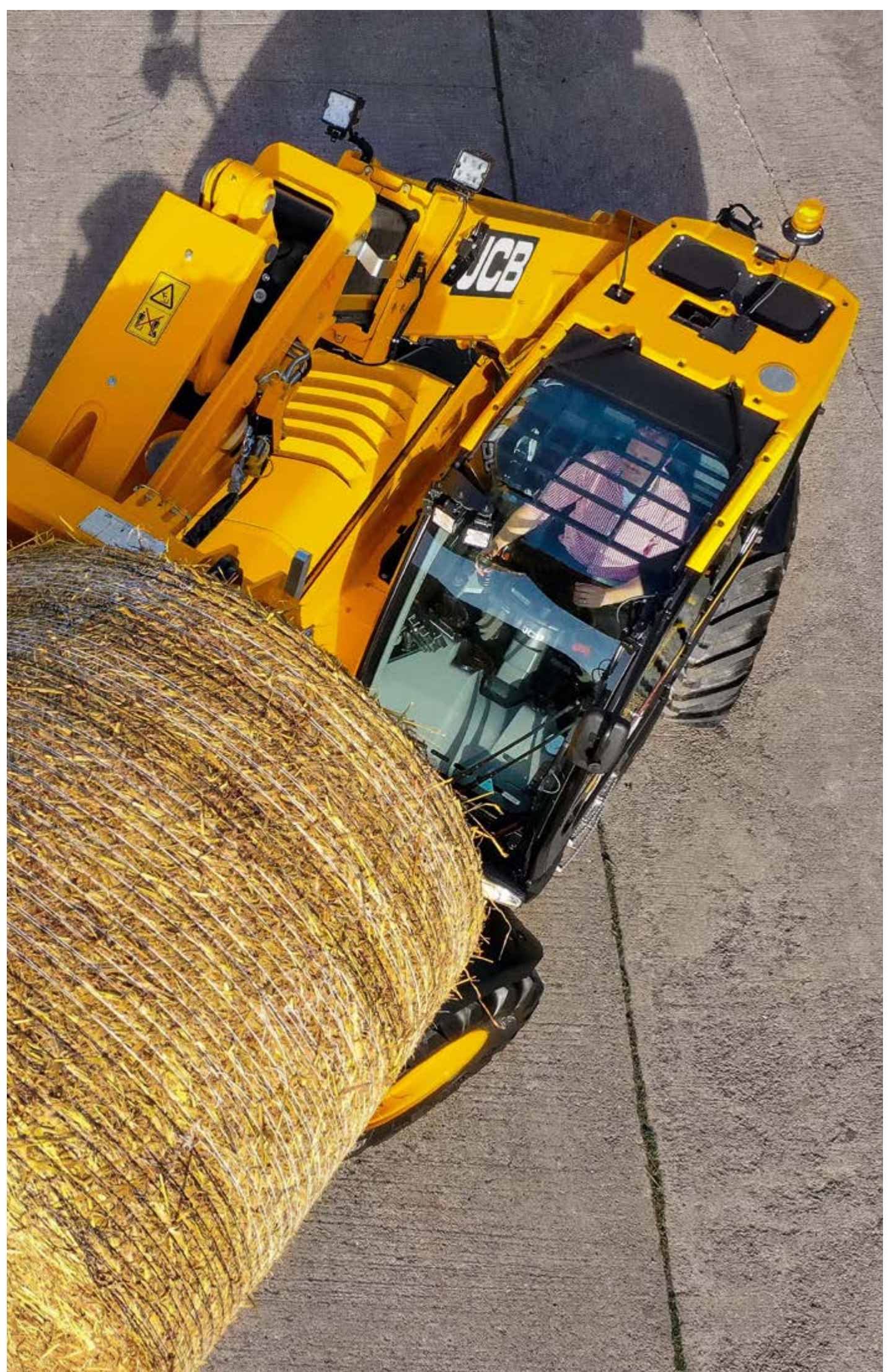
JCB PROFORMANCE

Our half leather, heated and vented air suspension seat, with electrically adjustable lumbar support and mounted armrest, top off the spacious operator environment.



MAXIMUM STABILITY

Larger axles, 500mm wide tyres and integrated front and rear hydraulic braking systems provide greater stability and comfort.



LOADALL | 542-70 AGRIPRO



SPECIFICATION.

MODEL	AGRIPRO
Lift height	7.04m
Lift capacities	4,200kg
Maximum engine power	173hp / 129kw
Maximum speed	50kph
Lift capacity at full height	3,000kg
Lift capacity at full reach	1,750kg
Forward reach at max height	0.48m
Reach with 1 tonne payload	3.71m

LIVE JCB LINK
FITTED AS STANDARD



STANDARD FEATURES.

- New JCB DIESELMAX Stage V compliant engine
- CommandPlus Cab
- DualTech Variable Transmission
- 50kph maximum speed
- Front / rear hydraulic auxiliary
- Smart Hydraulics
- 11 LED worklights
- European tractor homologated

The JCB logo, featuring the letters 'JCB' in a bold, white, sans-serif font on a black rectangular background, which is itself set within a larger yellow rectangular border.

“There isn’t a lot of other competition out there for what our job demands and what this machine marries up, its a match made in heaven.”

OLIVER WILLIAMS | DAIRY FARMER, ENGLAND

JCB PROFORMANCE.

REQUEST A QUOTE

The JCB logo, featuring the letters 'JCB' in a bold, white, sans-serif font on a black rectangular background, which is itself set within a larger yellow rectangular border.

www.jcb.com

